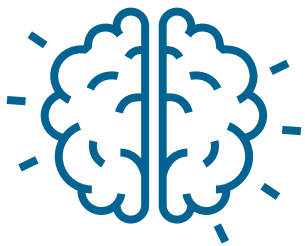


→ CAREER READINESS PROGRAM

Critical Thinking

Identify and respond to needs based upon an understanding of situational context and logical analysis of relevant information.

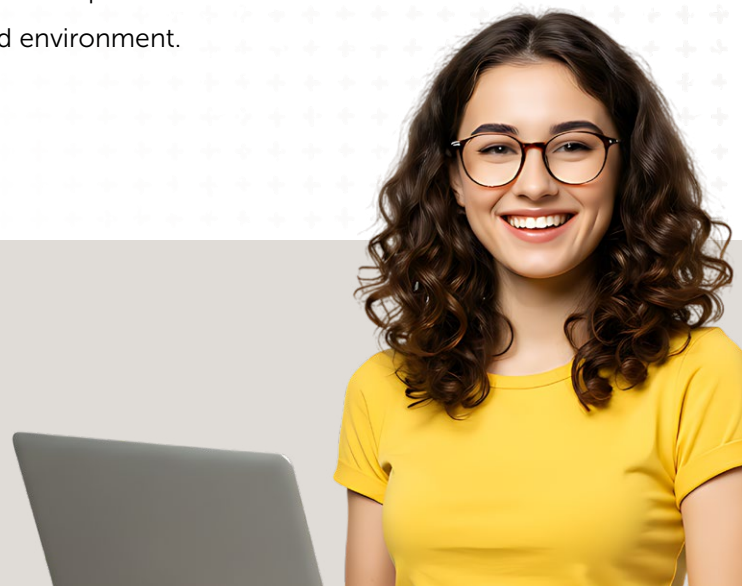


SAMPLE BEHAVIORS

- + Make decisions and solve problems using sound, inclusive reasoning and judgment.
- + Gather and analyze information from a diverse set of sources and individuals to fully understand a problem.
- + Proactively anticipate needs and prioritize action steps.
- + Accurately summarize and interpret data with an awareness of personal biases that may impact outcomes.
- + Effectively communicate actions and rationale, recognizing the diverse perspectives and lived experiences of stakeholders.
- + Multi-task well in a fast-paced environment.

→ What Is Career Readiness?

Career readiness is a foundation from which to demonstrate requisite core competencies that broadly prepare the college educated for success in the workplace and lifelong career management.



About NACE

Established in 1956, the National Association of Colleges and Employers (NACE) connects more than 17,000 career services and university relations and recruiting professionals, as well as the business solution providers that serve this community.

NACE believes in a world that is unifying in approach and where equal opportunities and equitable outcomes exist for all.

→ For more information on this initiative, visit naceweb.org/career-readiness-competencies.

nace

1 E Broad Street | Suite 130 - 1005 | Bethlehem, PA 18018-5934 | www.naceweb.org | 610.868.1421
©2025 National Association of Colleges and Employers. All rights reserved.